



Cognus

No Limits on Learning



SUTTON VIRTUAL SCHOOL: EXTENDED DUTIES

Educational support: A booklet for previously looked after children, SGO and Kinship families and children with a social worker



• • •

Sutton Virtual School – Cognus

• • •

Introduction

Sutton Virtual School acts as a local authority champion to promote the education of Children Looked After (CLA), Previously Looked After (PCLA), children with a social worker and children in kinship care, so they achieve the best educational outcomes.

Sutton Virtual School is available to provide educational advice and guidance to the parents of adopted children and children of Kinship care including those under special guardianship. Our contact details are available on the [**Sutton Virtual School website.**](#)

Mission and values

Our mission is to ensure positive educational outcomes for our children and young people.

Our values

Aspire to be our best, act with Integrity, show Courage and be Kind.



Our motto

Aim, Aspire, Achieve.

Education Advisors

Sutton Virtual School has a strategic role to promote the education of children with a social worker, previously looked-after or in kinship care. We work with the professionals supported these children rather than working directly with the child.



Hannah Miles Extended Duties
Education Advisor
Hannah.miles@cognus.org.uk
Please contact Hannah if you
have a query or need advice.



Sara Martin Strategic Lead
for Children with a Social
Worker
Sara.martin@cognus.org.uk

Extended Duties

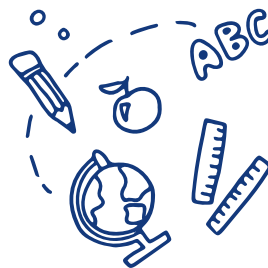
SUTTON VIRTUAL SCHOOL EDUCATION SUPPORT

Who do we
support?

We provide schools, social workers and other professionals educational advice and support in relation to young people who have, or had a social worker:

**Children in Need
Child Protection
Previously Looked-After
Kinship
Special Guardianship**

We also provide information and guidance to families of adopted or kinship care children, which can include those in kinship under special guardianship



What do
we offer?

- Training, support and networking for foster carers, PCLA, SGO and Kinship carers
- Resources and guidance on our website [here](https://www.cognus.org.uk/services/suttonvirtualschool/families/kinship/kinship-advice/)
- Training, CPD and consultations for schools and social care
- A package to support schools to embed relational practice

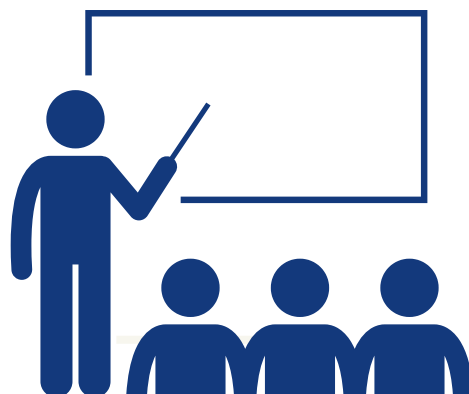
<https://www.cognus.org.uk/services/suttonvirtualschool/families/kinship/kinship-advice/>

Useful information

Designated Teacher

The role of the Designated Teacher Each school must have a Statutory Designated Teacher for Children Looked After and Previously Looked After. This should be a senior teacher who holds a position that would enable them to effectively influence change and policy within the school.

We recommend strongly that new adoptive and SGO parents make contact with the Designated Teacher at their child's school and regularly meet with them to ensure the school fully understands the needs of the child. We also have a website page to support parents in their conversations with schools, with examples of questions you may wish to ask in order to find out how your child is progressing and identify any additional needs. Full details around the duties and expectations of the Designated Teacher can be found on the DfE website.



Pupil Premium Funding

When a child is previously looked after, parents can apply for the school to receive pupil premium funds for the duration of their Statutory schooling. We encourage families to do this, so that the school has these important funds.

Children who have moved directly from birth family to Kinship, SGO or adoption without coming into care, are not classified as Children Previously Looked After and therefore Pupil Premium Plus can not be claimed for these children.

Unlike pupil premium funds for children who are in care, it is the school and not the Virtual School who are responsible for ensuring that pupil premium plus funding for previously looked-after children is spent within the Government conditions of the grant. **Importantly, this funding is not ring-fenced for the specific individual use of that child and therefore the school does not have to ensure it is spend directly on your child**, however, through development of a strong relationship with the Designated Teacher and clear identification of the child's needs, spending of pupil premium could be discussed.



Pupil Premium Funding for Previously Looked after children

The purpose of pupil premium for previously looked-after children is to raise educational attainment and close the gap between them and their peers. It can be spent by the school either on the child, on wider educational support mechanisms, or non-academic outcomes or activities that will help the school to increasingly meet the needs of all previously looked after children at the school. If you have a query or concern about your child's learning and development, or the use of PP funds, we suggest contacting the school's Designated Teacher in the first instance to discuss this.



Adopted children and young people

When a child is adopted, they will no longer be a child looked-after but known as a child previously looked-after.

If you are adopting a child, you can request funding through the Adoption Support Fund. Adopt London South (ALS) is a Regional Adoption Agency partnership of 9 local authorities – Croydon, Kingston, Richmond, Lambeth, Lewisham, Merton, Southwark, Sutton and Wandsworth. Their specialist adoption staff find families for children, recruit adopters and offer post adoption support to children, families, birth parents and adopted adults.

You can find lots of information about post-adoption support on their website at:

<https://adoptlondon.org.uk/adoption-support>



If you're looking for peer support from other adopters, these links take you to some useful organisations: ·

Adopt London | Adoption Support and Services across London



<https://wearefamilyadoption.org.uk/>

<https://www.first4adoption.org.uk/adoption-support/>

<https://www.adoptionuk.org/support> ·

<https://newfamilysocial.org.uk/> - for LGBT adoptive families

www.naotp.com

https://frg.org.uk/get-help-and-advice/what/adoption/?_gl=1*ontpbw*_up*MQ..*_gs*MQ..&gclid=EAlaIQobChMIvoz84f33igMV3x-tBh3v9TdHEAAYASAAEgLfV_D_BwE



Kinship and Special Guardianship Orders



“Kinship carers are family or friends who step up, often during an unexpected crisis, to care for a child when their parents aren’t able to. Kinship care is a commitment. To bring love and hope to a child who has experienced trauma. No matter what.”

[Kinship.org.uk](https://www.kinship.org.uk) is The leading kinship care charity in England and Wales. They support kinship carers.

When a child moves from care to a Special Guardianship Order, they are Children Previously Looked After. A child may also become SGO without coming into care.

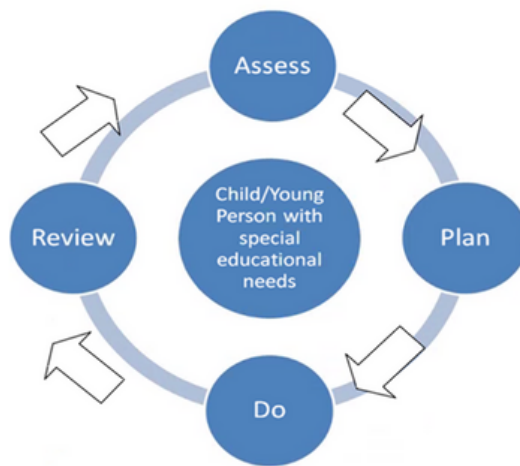
Sutton has a post SGO service (<https://www.sutton.gov.uk/w/special-guardianship-kinship-permanence>), which can offer additional support, including: advice and therapeutic support.

specialguardianshipteam@sutton.gov.uk



Special Educational Needs (SEND)

Most children and young people's SEND can be managed in a mainstream school. If a child or young person needs additional support, the extra support they need will be assessed using the Assess, Plan, Do and Review cycle.



Each child identified as requiring special educational provision should have a SEND Support Plan (SSP) (also called IEP/Individual Education Plan, Passport or Inclusion Plan) which should cover four main areas:

- Pupil's views, aspirations, strengths and wishes
- Barriers to learning (SEND)
- Provision to meet those needs
- Outcomes sought (Section 6.40 Code of Practice: Consideration of whether special educational provision is required should start with the desired outcomes).

The SSP should be reviewed with the pupil and parent/carers at least three times a year as part of the Assess, Plan, Do, Review cycle (i.e. the Graduated Response).

Further information please visit Cognus <https://cognus.org.uk/services/special-educational-needs/>

SIASS provides free, impartial, and confidential information and advice. We support families of children and young people with a Special Educational Need or Disability in Sutton
Sutton@SIASS.co.uk: <https://www.siass.co.uk/>

LOCAL OFFER <https://suttoninformationhub.org.uk/pages/send-local-offer>

Training - Events - Support



Coffee and learning sessions - please see the leaflets below for coffee and learning sessions in Sutton



Free training and events for kinship carers | Kinship
<https://kinship.org.uk/support-and-advice/training-and-events/>



Cognus offers a wide range of training please visit our website:
<https://www.cognus.org.uk>



**Sutton
Information
Hub**

Home | Sutton Information
Hub

<https://suttoninformationhub.org.uk>

Training - Events - Support



CARERS' COFFEE AND LEARNING SPRING TERM

**Welcoming Sutton carers of
Children in Care | Previously Looked-After | Special
Guardianship | Adopters | Kinship Care**

Join us for a themed discussion and get advice about the children you care for. Meet other carers and have some time to ask questions. Education and therapeutic specialists will be on hand to answer questions and offer advice.



30/01/25 - 10:30-12:30pm

Supporting young people who have anxiety, PDA or neurodivergence - led by Therapeutic Specialist

Where: The Cabin, Sutton Family Centre, SM1 2SD

25/02/25 - 1.00 - 1:45pm

Early Years and Primary: Promoting life skills and learning at home - led by Sutton Virtual School Advisor

Where: Virtual session - link provided on sign up

25/02/25 - 2.00 - 2:45pm

Secondary: Promoting life skills and learning at home - led by Sutton Virtual School Advisor

Where: Virtual session - link provided on sign up

20/03/25 - 10.30 - 11.45am

Foster Carers' session on behaviour, helping to regulate and manage emotions - led by Therapeutic Specialists

Where: The Cabin, Sutton Family Centre, SM1 2SD

20/03/25 - 12 - 1.15pm

All other Carers' session on behaviour, helping to regulate and manage emotions - led by Therapeutic Specialists

Where: The Cabin, Sutton Family Centre, SM1 2SD

Scan the QR code or click [here](#) to sign up to these events

Any questions please contact Hannah Miles - Extended Duties Education advisor -
hannah.miles@cognus.org.uk

Training - Events - Support



CARERS' COFFEE AND LEARNING SUMMER TERM

Welcoming Sutton carers of
Children in Care | Previously Looked-After | Special
Guardianship | Adopters | Kinship Care

Join us for a themed discussion and get advice about the children you care for. Meet other carers and have some time to ask questions. Education and therapeutic specialists will be on hand to answer questions and offer advice.

17/06/25 - 1.30-2.30pm
Supporting young people with transitions with school and placements- *led by Sutton Virtual School Advisor*

Where: Virtual Session - link provided on sign up

04/06/25 - 10.30 - 12.30pm
Promoting Cultural Differences / Life story work - *led by Therapeutic specialists*

Where: The Cabin, Sutton Life Centre, SM1 2SD



Scan the QR code or click [here](#) to sign up to these events

Any questions please contact Hannah Miles - Extended Duties
Education advisor - hannah.miles@cognus.org.uk